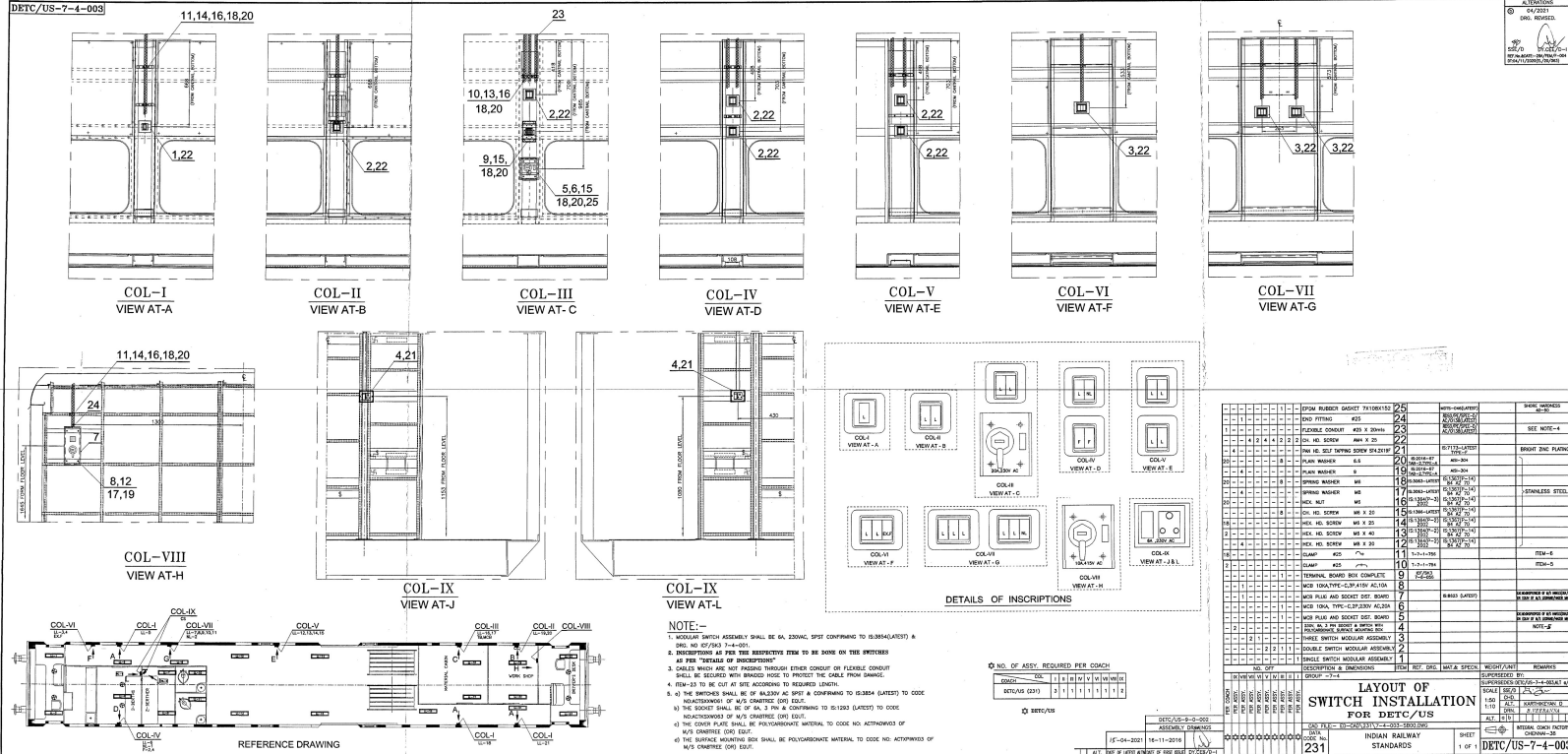
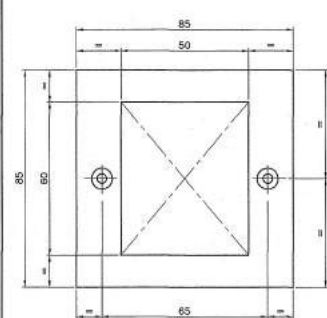


Additional Terms and Conditions for Bidders (including Pre-Qualification requirements)**ATC for “Indented item”.****Additional Terms and conditions:**

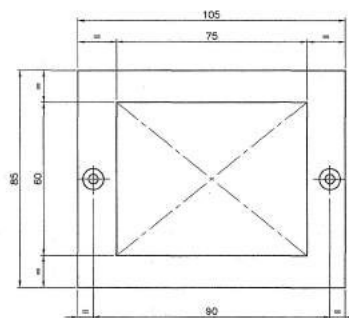
S. No	Description of requirement	Document to be attached
1	Bidder should submit a self-declaration stating that, “Offered item is same as per enquiry and there is no deviation”.	Self-declaration on letterhead of firm.
2	Data Sheet / Drawings / Catalogues of the product (s) offered in the bid, are to be uploaded along with the bid documents. Buyers can match and verify the Data Sheet with the product specifications offered. In case of any unexplained mismatch of technical parameters, the bid is liable for rejection	Data Sheet / Drawings / Catalogues of the product (s)
3	In case Bidder is not be OEM but its Reseller then bidder to submit valid authorisation certificate from OEM with the bid.	Authorisation certificate
4	Contract shall be awarded to such vendors who have supplied the “ required PI items #1: SINGLE SWITCH MODULAR ASSEMBLY, #2: DOUBLE SWITCH MODULAR ASSEMBLY, #3: THREE SWITCH MODULAR ASSEMBLY ” minimum 5 nos in last 7 years for DETC application	Purchase order copy and its invoice copy..



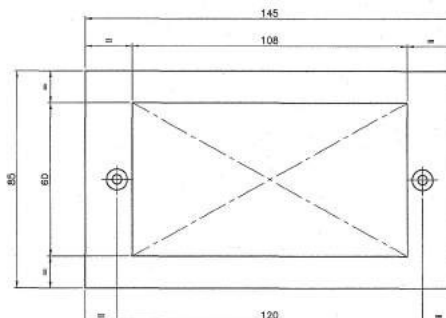
ICF/SK₃-7-4-001



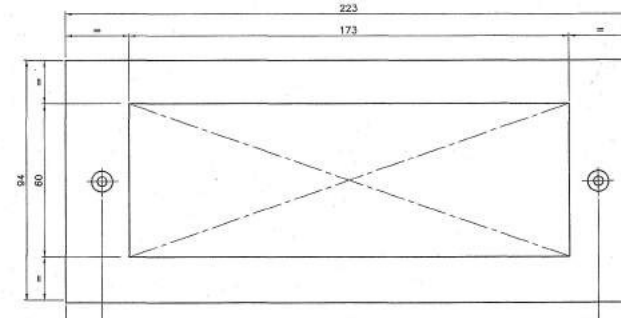
SINGLE/DOUBLE SWITCH PLATE



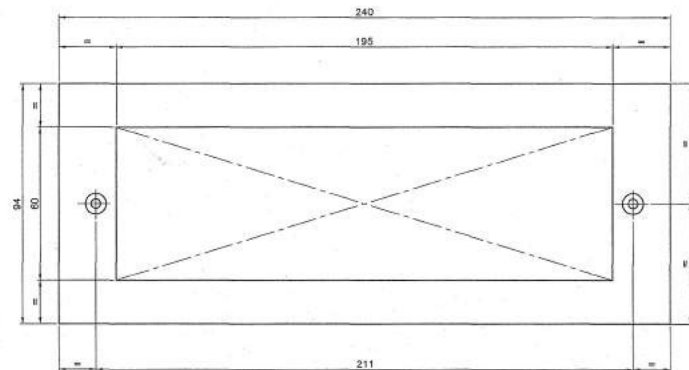
THREE SWITCH PLATE



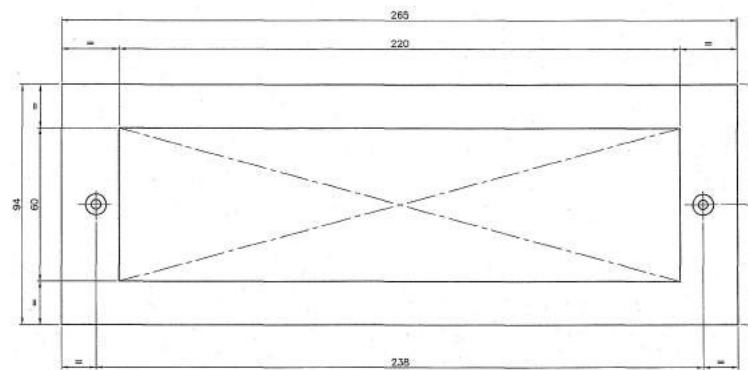
FOUR SWITCH PLATE



SIX SWITCH PLATE



EIGHT SWITCH PLATE



NINE SWITCH PLATE

ALTERATIONS	
07/2015	EIGHT & NINE SWITCH PLATE ADDED.
-Sd- SSE/D	-Sd- DY.CEE/D
08/2015	SIX SWITCH PLATE ADDED.
-Sd- SSE/D	-Sd- DY.CEE/D

NO. OF	DESCRIPTION & DIMENSIONS	ITEM	REF.DRGS.	MAT. & SPEC.	WEIGHT/UNIT	REMARKS
IV	III	I	GROUP - 7-4			SUPERSEDED BY:
						SUPERSEDES: ICF/SK ₃ -7-4-001/ALT/
						SCALE: 1:1
						ALT. BATHARAJA
						DRN. G.CHANDRAKANTH
						ALT. c b
						INTEGRAL COACH FACTORY CHENNAI - 38
						ICF/SK ₃ -7-4-001

ASSEMBLY DRAWING	CAD FILE NO: ED-CAD/329/7-4/001-SB00.DWG
11-08-2015	02-12-2004
ALT.	DATE OF LATEST ALTN DATE OF FIRST ISSUE
	DY.CEE/D

DATA CODE No.	INDIAN RAILWAY STANDARDS	SHEET
329		1 OF 1